

# STAINLESS STEEL 304 PRESS FIT FITTINGS (M PROFILE)

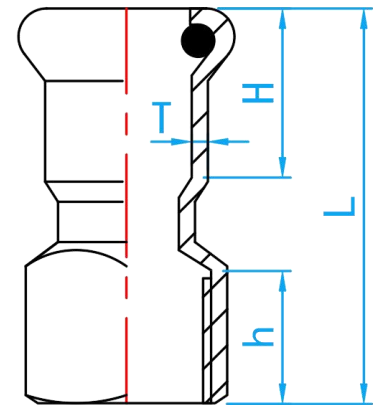


A Product of the nPressGuard® Solution



COMPLY WITH BSEN1254-2: 1998

## FI SOCKET



CROSS SECTIONAL VIEW

### DIMENSIONS

SKU	SIZE (mm x inch)	L(mm)	H(mm)	h(mm)	T (mm)	WEIGHT(kg)	PCS/CTN
SSPFNFIA01515	15×1/2" BSP	52	20	15.5	1.5	0.050	300
SSPFNFIA02015	22×1/2" BSP	50	20	15.5	1.5	0.055	240
SSPFNFIA02020	22×3/4" BSP	50	21	16.0	1.5	0.070	170
SSPFNFIA02515	28×1/2" BSP	65	23	15.5	1.5	0.075	100
SSPFNFIA02520	28×3/4" BSP	54	23	16.0	1.5	0.080	100
SSPFNFIA02525	28×1" BSP	57	23	20.0	1.5	0.110	120
SSPFNFIA03515	35×1/2" BSP	72	26	15.5	1.5	0.095	80
SSPFNFIA03520	35×3/4" BSP	70	26	16.0	1.5	0.110	70
SSPFNFIA03525	35×1" BSP	64	26	20.0	1.5	0.180	80
SSPFNFIA03535	35×11/4" BSP	65	26	22.0	1.5	0.150	75
SSPFNFIA03542	35×11/2" BSP	77	26	25.0	1.5	0.185	60
SSPFNFIA04215	42×1/2" BSP	80	31	15.5	1.5	0.134	120
SSPFNFIA04220	42×3/4" BSP	77	31	16.0	1.5	0.135	120
SSPFNFIA04225	42×1" BSP	80	31	20.0	1.5	0.155	100
SSPFNFIA04235	42×11/4" BSP	70	31	22.0	1.5	0.170	100
SSPFNFIA04242	42×11/2" BSP	71	31	25.0	1.5	0.200	60
SSPFNFIA04250	42×2" BSP	90	31	25.0	1.5	0.280	50
SSPFNFIA05015	54×1/2" BSP	90	36	15.5	1.5	0.170	70
SSPFNFIA05020	54×3/4" BSP	90	36	16.0	1.5	0.178	60
SSPFNFIA05025	54×1" BSP	92	36	20.0	1.5	0.205	60
SSPFNFIA05035	54×11/4" BSP	92	36	22.0	1.5	0.229	60
SSPFNFIA05042	54×11/2" BSP	92	36	25.0	1.5	0.246	36
SSPFNFIA05050	54×2" BSP	84	35	25.0	1.5	0.285	36
SSPFNFIA06515	67×1/2" BSP	111	50	15.5	1.8	0.310	28
SSPFNFIA06550	67×2" BSP	115	50	25.0	1.8	0.435	15
SSPFNFIA06565	67×21/2" BSP	115	50	28.0	1.8	0.570	15
SSPFNFIA08015	76×1/2" BSP	120	51	15.5	2.0	0.405	24
SSPFNFIA10015	108×1/2" BSP	153	75	15.5	2.0	0.810	10